

# **RECENT POPULATION TRENDS IN SOUTH AUSTRALIA**

by

**Graeme Hugo**

**Federation Fellow**

**Professor of Geography and**

**Director of the National Centre for Social Applications of GIS**

**The University of Adelaide**

**Presentation to Seminar organised by SA Cabinet Office, State  
Administration Centre, Adelaide**

**12 April 2005**

# Outline of Presentation

- Introduction
- Data Sources
- Population Growth Trends
- Mortality
- Fertility
- Interstate Migration
- International Migration
- Ageing
- Population Distribution
- Conclusion

# Population Monitoring

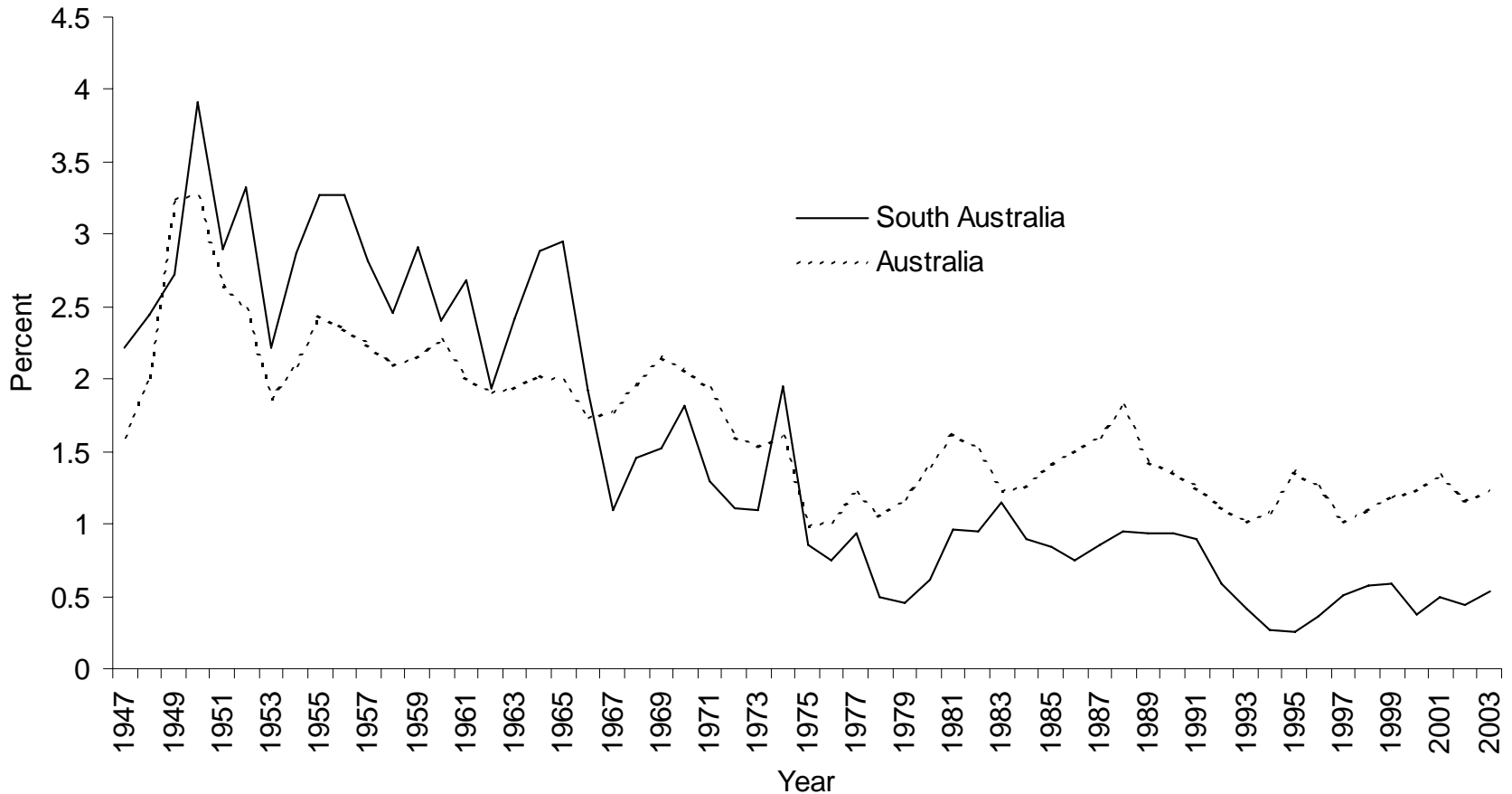
- Census
- ABS quarterly population estimates
- Most recent released 24 March 2005 up to end of September quarter 2004

# Data Sources

- Quinquennial population censuses
- Births and deaths registration
- DIMIA arrivals and departures
- ABS estimates of interstate migration

# Australia and South Australia: Rate of Population Growth per Annum, 1947-2003

Source: ABS 1986 and ABS *Australian Demographic Statistics*, various issues



Note: Data are for Calendar Years

## Population Change September 2003 – September 2004

State	Population Sept. 2004	Change in Last Year	
	('000)	No. ('000)	%
New South Wales	6744.4	50.1	0.7
Victoria	4988.8	61.3	1.2
Queensland	3899.6	78.6	2.1
South Australia	1536.3	8.2	0.5
Western Australia	1989.6	31.6	1.6
Tasmania	483.0	4.4	0.9
Northern Territory	200.4	1.7	0.8
Australian Capital Territory	324.0	0.9	0.3
Australia	20,168.9	236.7	1.2

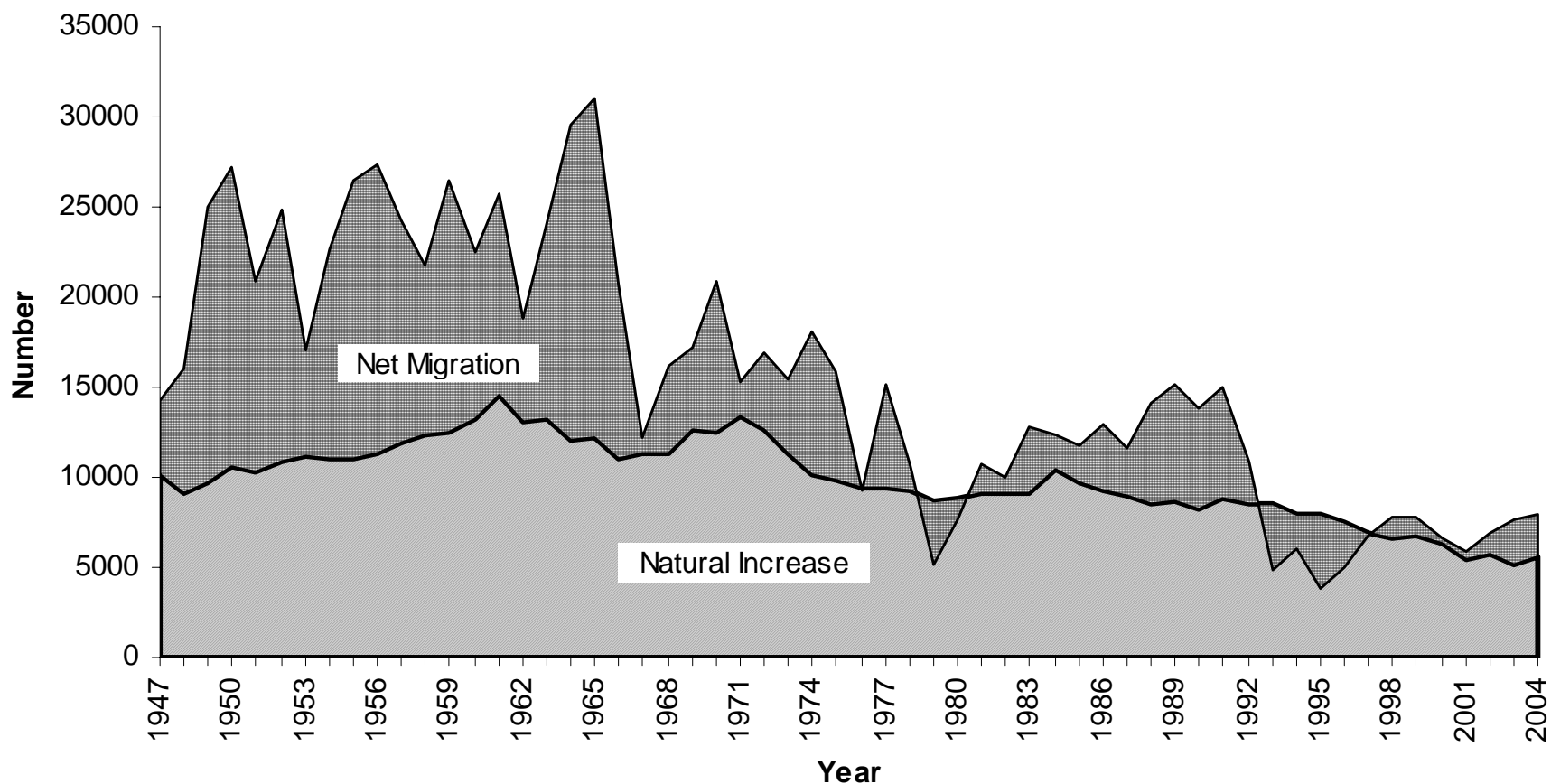
# Components of Change

Natural Increase – Births – Deaths

Net Migration – Inmigrants – Outmigrants

# South Australia: Total Population Growth Showing the Natural Increase and Net Migration Components, 1947-2004

Source: ABS 1986 and ABS *Australian Demographic Statistics*, various issues



# Australian States and Territories: Percent of Population Growth in 2003-2004 due to Natural Increase, Net Overseas Migration and Net Interstate Migration

Source: ABS 2005

	Total Population Growth	% Growth due to Natural Increase	% Growth due to Overseas Migration	% Growth due to Net Interstate Migration
New South Wales	49,242	81.96	79.87	-61.83
Victoria	61,354	47.42	56.32	-3.73
Queensland	80,998	30.42	24.28	45.29
South Australia	7,949	71.13	69.09	-40.22
Western Australia	32,256	42.90	53.16	3.94
Tasmania	4,823	35.46	13.23	51.32
Northern Territory	1,369	209.64	44.34	-153.98
Australian Capital Territory	658	430.85	32.67	-363.53
Australia	238,651	50.71	49.29	-

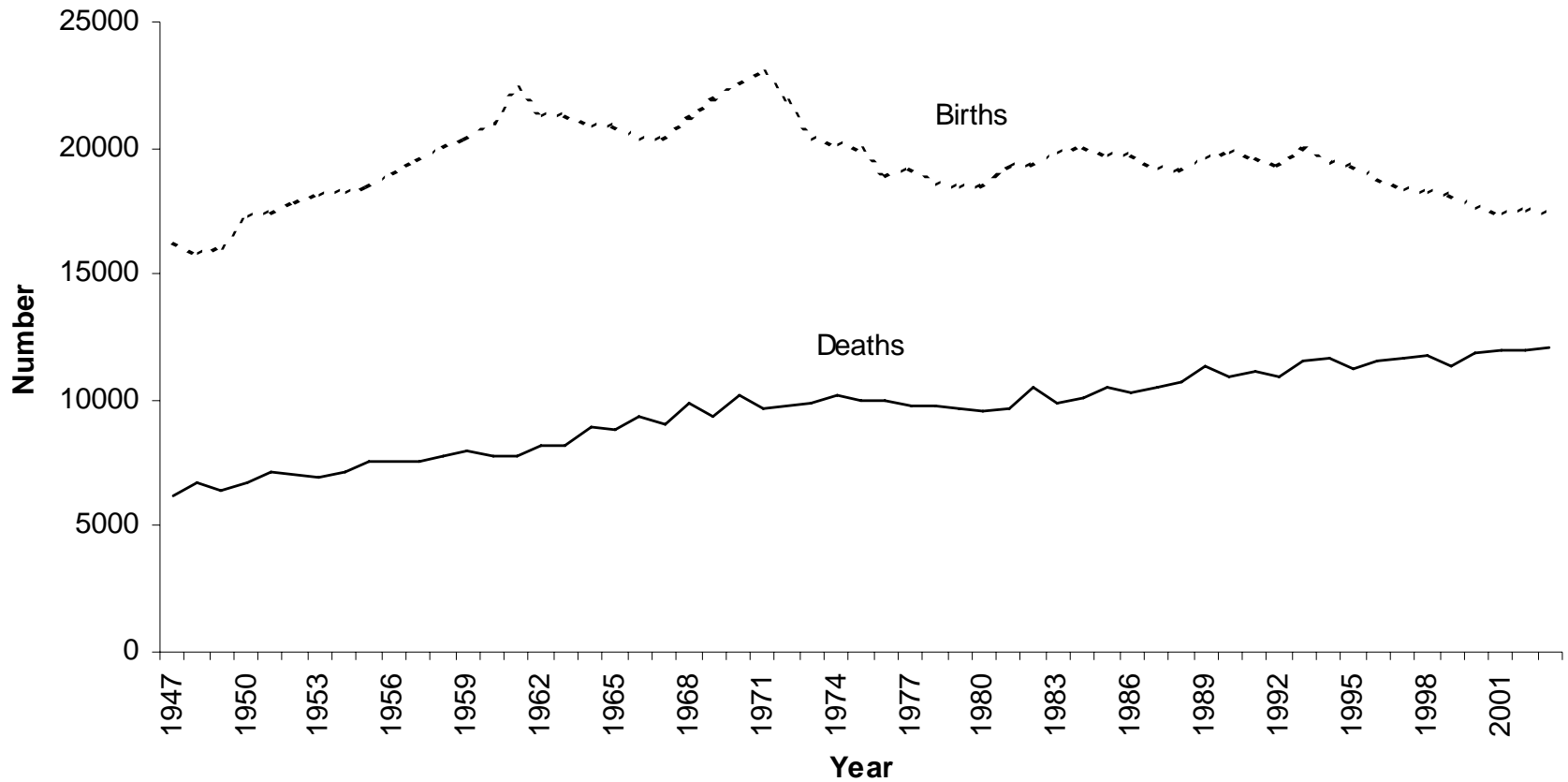
---

	Sept. 03 – Sept. 04	03-04	02-03
Natural Increase	: +5,672	5,654	5,198
Net Overseas Migration	: +5,568	5,492	3,904
Net Interstate Migration	: -3,067	-3,197	-1,497

---

# South Australia: Number of Births and Deaths, 1947 to 2003

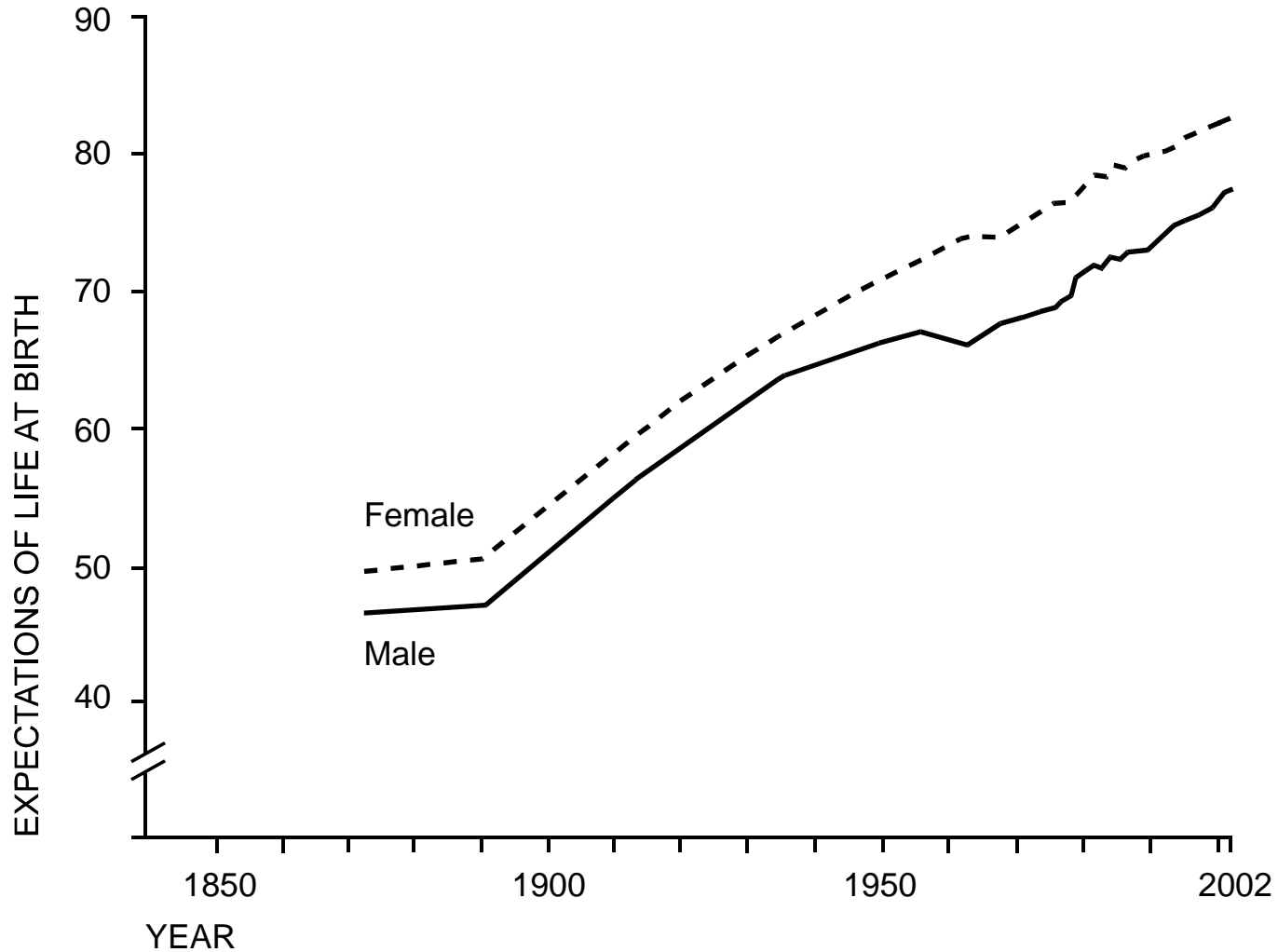
Source: ABS *South Australian Year Book* and *Australian Demographic Statistics*, various issues



Note: Data are for Calendar Years

# Australia: Expectation of Life at Birth, 1870-2002

Source: Hugo 1986 and ABS Deaths Bulletins



# Mortality

---

	Number	Standardised Death Rate
1998-99	11,648	7.13
1999-2000	11,590	6.89
2000-2001	11,919	6.88
2001-2002	11,807	6.62
2002-2003	12,088	6.57
2003-2004	11,835	6.32

---

# Australia: Expectation of Life at Age 50, 1870-1881 to 2001-2003

Source: Young and Ruzicka 1982, ABS 1981 and 2004

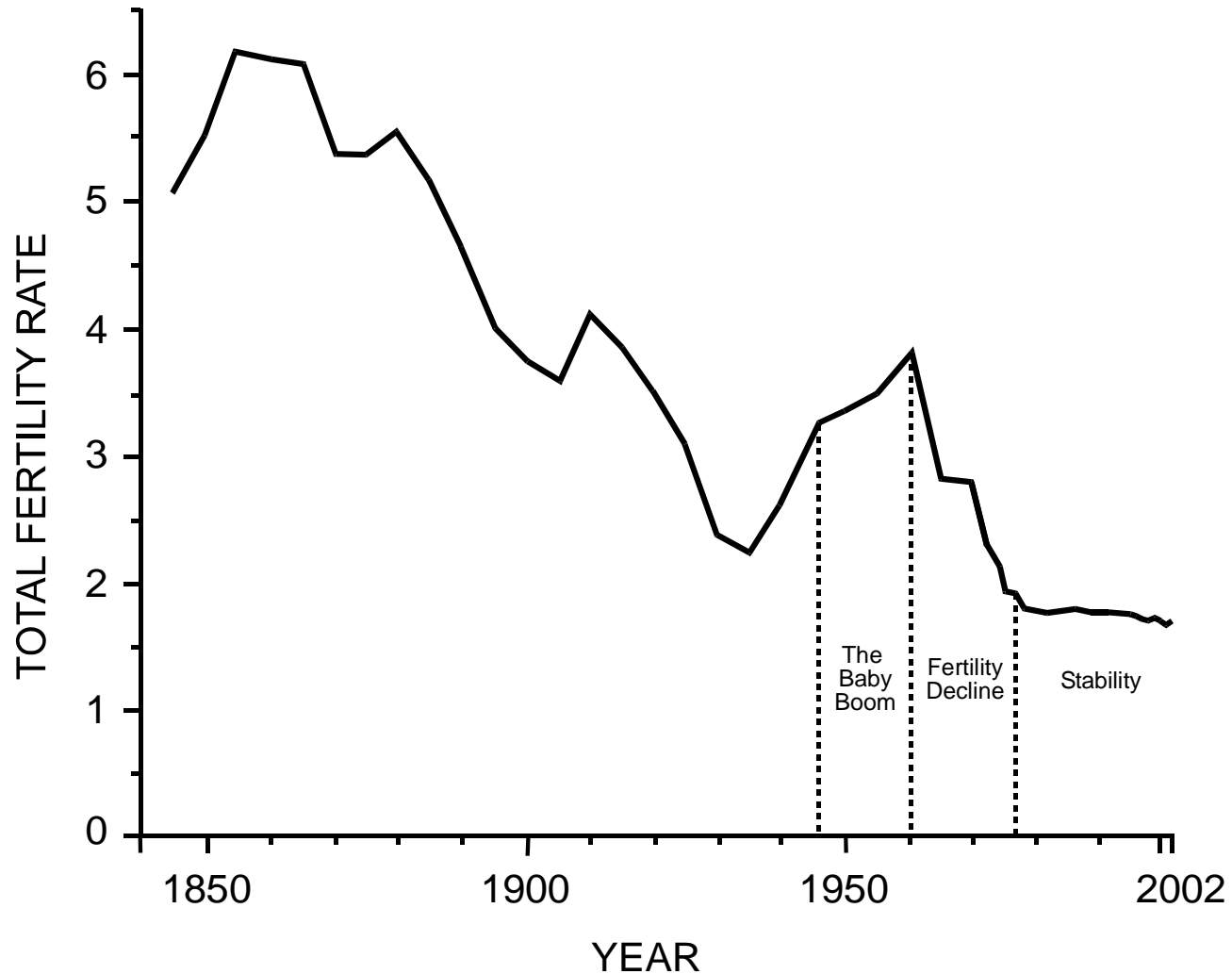
---

Year	Males	Females
1870-1881	19.80	22.26
1970-72	22.87	28.10
2001-2003	30.37	34.43

---

# South Australia: Total Fertility Rate, 1845-2002

Source: Hugo 1983, CBCS *Demography Bulletin* and ABS *Births Australia*, various issues



## South Australia: Births, 1998-99 to 2003-04

Source: ABS 2005

---

Year	Number of Births	Births as % of National Total
1998-99	18,399	7.36
1999-2000	17,896	7.18
2000-2001	17,414	7.04
2001-2002	17,579	7.10
2002-2003	17,286	6.99
2003-2004	17,489	6.87

---

## South Australia: Total Fertility Rates, 1998-99 to 2003-04

Source: ABS 2005

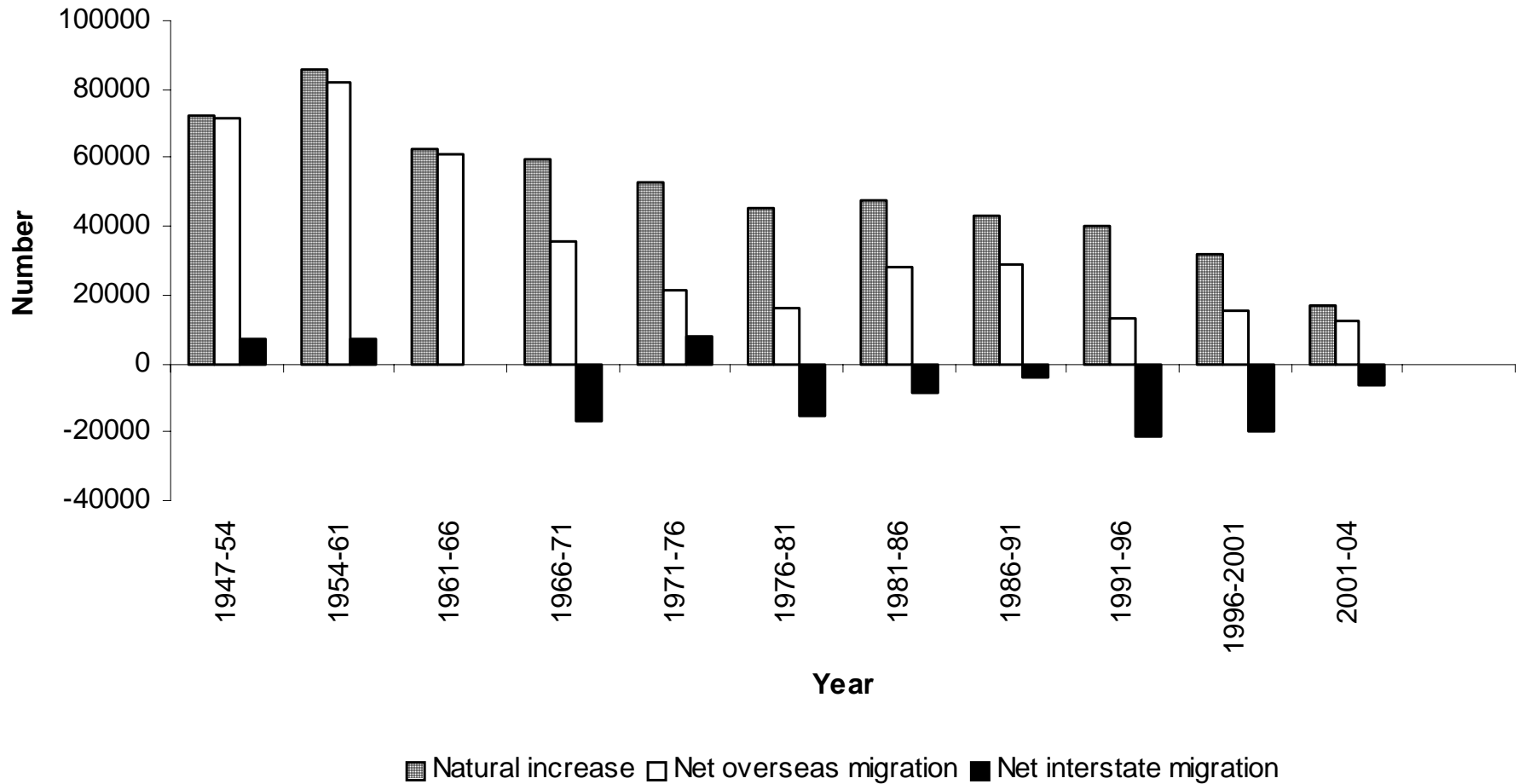
---

Year	TFR	TFR as % of National TFR
1998-99	1.727	97.90
1999-2000	1.700	96.76
2000-2001	1.678	96.27
2001-2002	1.710	98.50
2002-2003	1.691	97.46
2003-2004	1.727	97.41

---

# South Australia: Components of Population Change, 1947-54 to 2001-04

Source: Bell 1997 and ABS 2005



# Net Overseas Migration, South Australia and Australia 1991-2004

Source: ABS *Australian Demographic Statistics*, various issues

Year	South Australia		Australia
	No.	Percent	
1991-92	2,897	4.2	68,580
1992-93	1,546	5.1	30,042
1993-94	1,994	4.3	46,549
1994-95	2,883	3.6	80,125
1995-96	3,653	3.5	104,137
1996-97	3,104	3.6	87,079
1997-98	3,610	4.5	79,162
1998-99	2,682	2.8	96,483
1999-2000	3,829	3.6	107,275
2000-01	2,765	2.0	135,673
2001-02	2,798	2.5	110,556
2002-03	3,904	3.4	116,498
2003-04	5,492	4.7	117,632

# South Australia Share of Australia's Migrant Intake by Visa Class 2003-04

Source: DIMIA 2005

---

Visa Class	Non Permanent Arrivals in SA	Share of Australian Total
Family	1,240	4.2
Skilled	2,176	4.7
Business	102	2.0
Humanitarian	844	8.2
Total	4,362	4.8

---

## Number of Immigrants with Visas Granted under the State Regional Specific Migration Mechanisms and Their Proportion of the Total Intake 1997-98 to 2003-04

Source: DIMIA *Population Flows: Immigration Aspects*, various issues; Ruddock 2002a to h; DIMIA *Immigration Update*, various issues

Year	Number	Percent of Total Intake	Percent in SA
1997-98	1,753	2.3	34.5
1998-99	2,804	3.3	36.9
1999-2000	3,309	3.6	21.2
2000-01	3,846	3.6	19.5
2001-02	4,136	4.6	17.0
2002-03	7,941	8.5	16.7
2003-04	12,725	11.4	16.6

# South Australia: In and Out International Migration, 1993-2004

Source: DIMIA, Overseas Arrivals Departures

Year	Settlers	Long Term Arrivals	Permanent Departures	Long Term Departures
2003-04	4,773	13,252	2,403	7,965
2002-03	3,657	11,737	2,124	7,338
2001-02	3,316	10,465	2,032	7,268
2000-01	3,183	7,612	1,961	6,069
1999-2000	3,105	8,047	1,666	6,332
1998-99	3,320	6,071	1,636	5,508
1997-98	3,069	8,365	1,339	6,935
1996-97	3,336	7,861	1,412	6,354
1995-96	3,842	7,582	1,444	6,022
1994-95	3,742	7,015	1,328	5,927
1993-94	3,201	6,462	1,340	5,392
Total	38,544	94,469	18,685	71,110

# Net Overseas Migration, 1992-93 to 2003-2004

Source: ABS *Australian Demographic Statistics* (3101.0), various issues

Year	New South Wales	Victoria	South Australia
1992-93	12,628	7,965	1,546
1993-94	21,929	10,698	1,994
1994-95	35,952	19,295	2,883
1995-96	48,045	25,692	3,653
1996-97	37,291	21,080	3,104
1997-98	34,899	20,801	3,390
1998-99	41,088	24,691	2,682
1999-2000	43,689	26,982	3,829
2000-01	58,619	35,336	2,765
2001-02	44,411	20,252	2,798
2002-03	40,919	26,777	3,904
2003-04	39,330	34,552	5,492

# Crucial Questions

- If intake increased (20,000) how much to SA?
- SSRM Schemes
- Refugee/Humanitarian Intake
- Balance between in and out migration

# Net Interstate Migration, 1998-99 to 2003-04

Source: ABS 2005

---

Year	Net Migration
1998-99	-1,631
1999-2000	-3,531
2000-01	-2,418
2001-02	-1,602
2002-03	-1,497
2003-04	-3,197

---

# South Australia: Net Interstate Migration by Quarter, December 2001 to September 2004

Source: ABS *Australian Demographic Statistics*, various issues

Period		Net Interstate Migration
2001	December	-110
2002	March	-470
	June	-447
	September	35
	December	-655
2003	March	-456
	June	-421
	September	-656
	December	-413
2004	March	-1018
	June	-1110
	September	-526

# Selectivity of Migration

- Young adults
- Highly educated
- Highly paid
- Professional and skilled

# Distribution of Population Growth, 2003-04

Source: ABS 2005

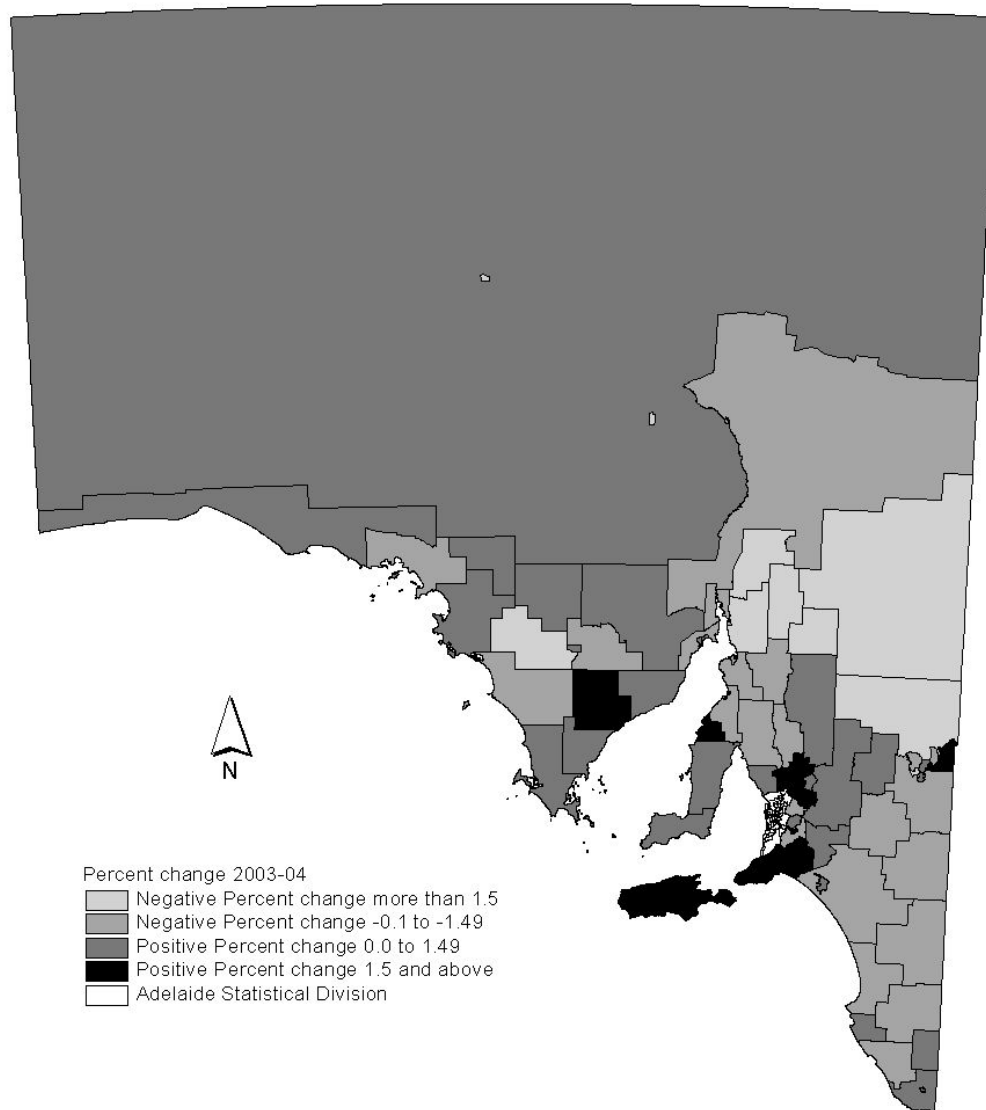
---

	No.	Percent
ASD	+5,218	65.6
OASD	+2,685	33.8
Yorke & LN	+197	2.5
Murray Lands	+116	1.5
South East	+89	1.2
Eyre	+177	2.2
Northern	-505	-6.0

---

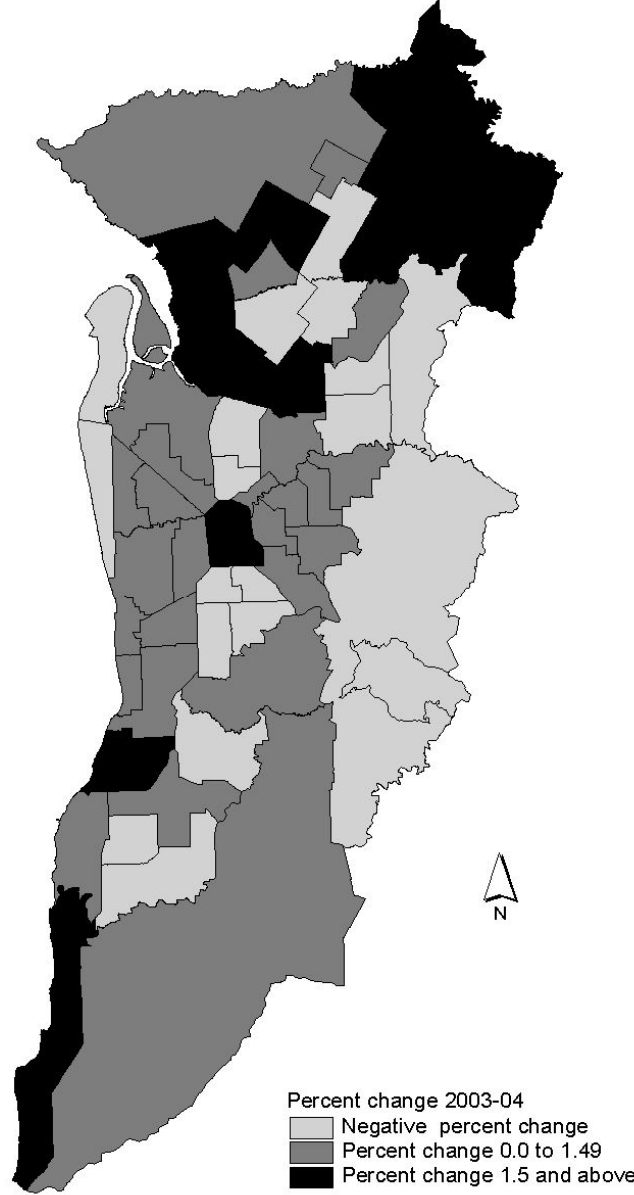
# South Australia: Percent Change 2003-04 by SLA

Source: ABS 2005



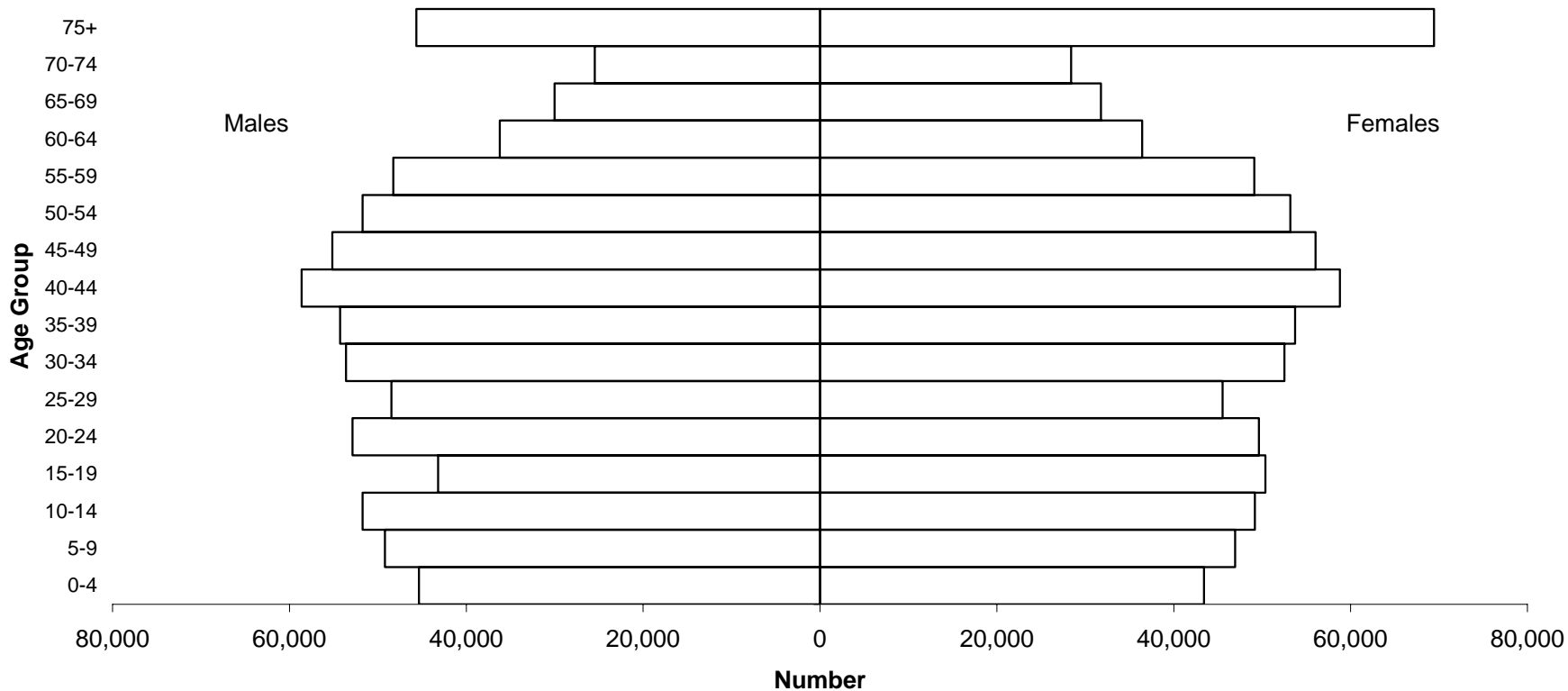
# Adelaide Statistical Division: Percent Change 2003-04 by SLA

Source: ABS 2005



# South Australia: Age-Sex Structure of the Population, 2004

Source: ABS 2005



# South Australia: Population by Age, 2001 to 2004

Source: ABS Estimated Resident Population Data

Age	2001	2004	% Change 2001-04
0-4	92,438	88,793	-3.94
5-14	200,117	197,039	-1.54
15-24	199,182	206,059	3.45
25-39	323,586	308,088	-4.79
40-54	329,698	333,509	1.16
55-64	149,367	169,995	13.81
65-74	114,950	115,669	0.63
75+	105,516	115,098	9.08
Total	1,514,854	1,534,250	1.28

# CAUTIONS AND CONCLUSIONS

- Need to be careful in interpretation of estimates especially interstate migration
- Need more analysis of migration of all kinds
- Not only numbers crucial – characteristics
- Contribution of migration to human resources situation